

SWING

# LIVI 500

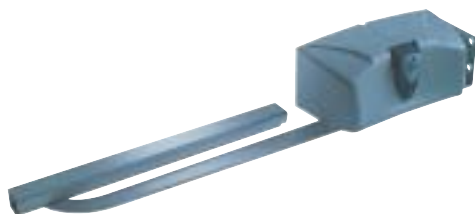
Articulated arm automation for swing gates



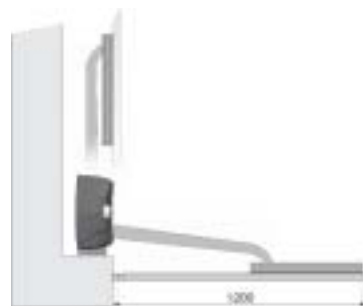
## Applications



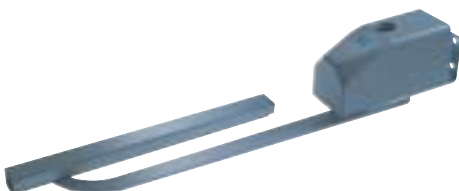
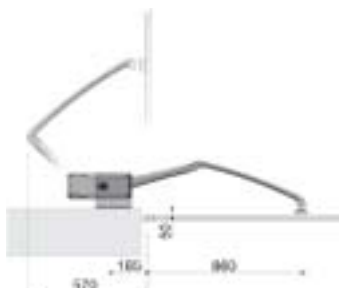
LIVI 502 with articulated arm



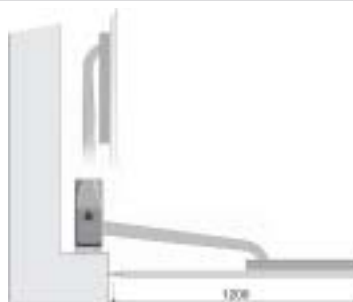
LIVI 502 with rail arm



LIVI 500 with articulated arm



LIVI 500 with rail arm





Electromechanical operator for swing gates

# LIVI 502

ADAPTABLE TO ALL



LIVI 502 is the ideal solution **for each type** of **swing gates**, even with large posts, where the installation of other types of operators is impossible or impractical. The installation, **easy and fast**, does not require any modification to the gate structure.

### For leafs up to 3 m

**LIVI 502:** operator 230V ac, self-locking.

**LIVI 503:** operator 230V ac with limit switches, self-locking.

### For longer leafs\*

**LIVI 502R:** operator 230V ac not self-locking.

**LIVI 503R:** operator 230V ac with limit switches, not self-locking.

*\*Always use with electric lock.*

### For solutions in low voltage\*

**LIVI 502/24:** operator 24V dc, self-locking.

**LIVI 503/24:** operator 24V dc with limit-switches, self-locking.

*\*the automation in 24V dc enables programmable limit switches and the final slow-down in opening and closing; moreover a battery backup system enables the operation in case of power failure.*

*All models in 230V ac are also available in slow version (add L to code).*

*The DEA System control boards are planned to optimize the performances of Livi 500 range.*

*It is suggested to use control boards with electronic force adjustment: 202E/3 (230V ac) or 224/2 (24V dc).*

## The models

- Electromechanical automation, 230V ac and 24V dc.
- Suitable for leafs up to 3,5 m long.
- Suitable with large posts.
- Easy to install, no welding required.
- Single model for left or right side mounting.
- Simple and safe unlocking system by key.
- Grease soaked gear motor.
- Quick and silent.
- Articulated aluminium arm.
- Rail arm (optional).



*Simple unlocking system by key.*



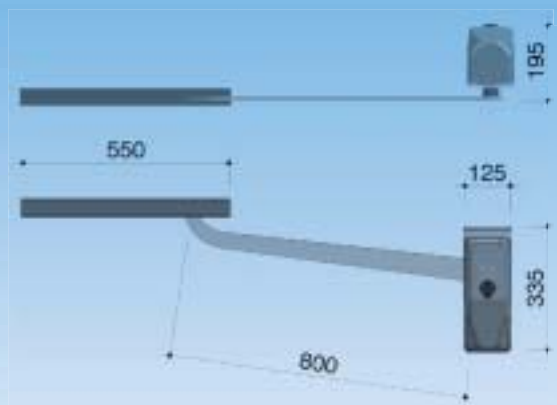
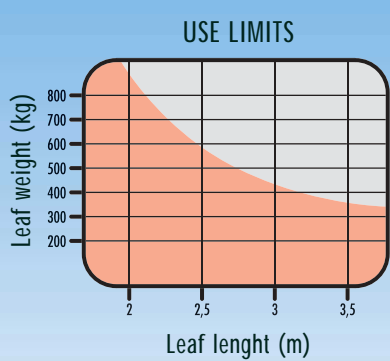
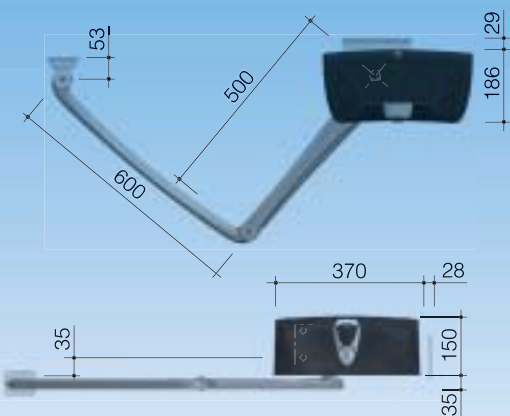
*Control boards.*



*Safety flashing light Lumy with incorporated aerial.*



*Articulated aluminium arm, sturdy and with no scissor movement.*

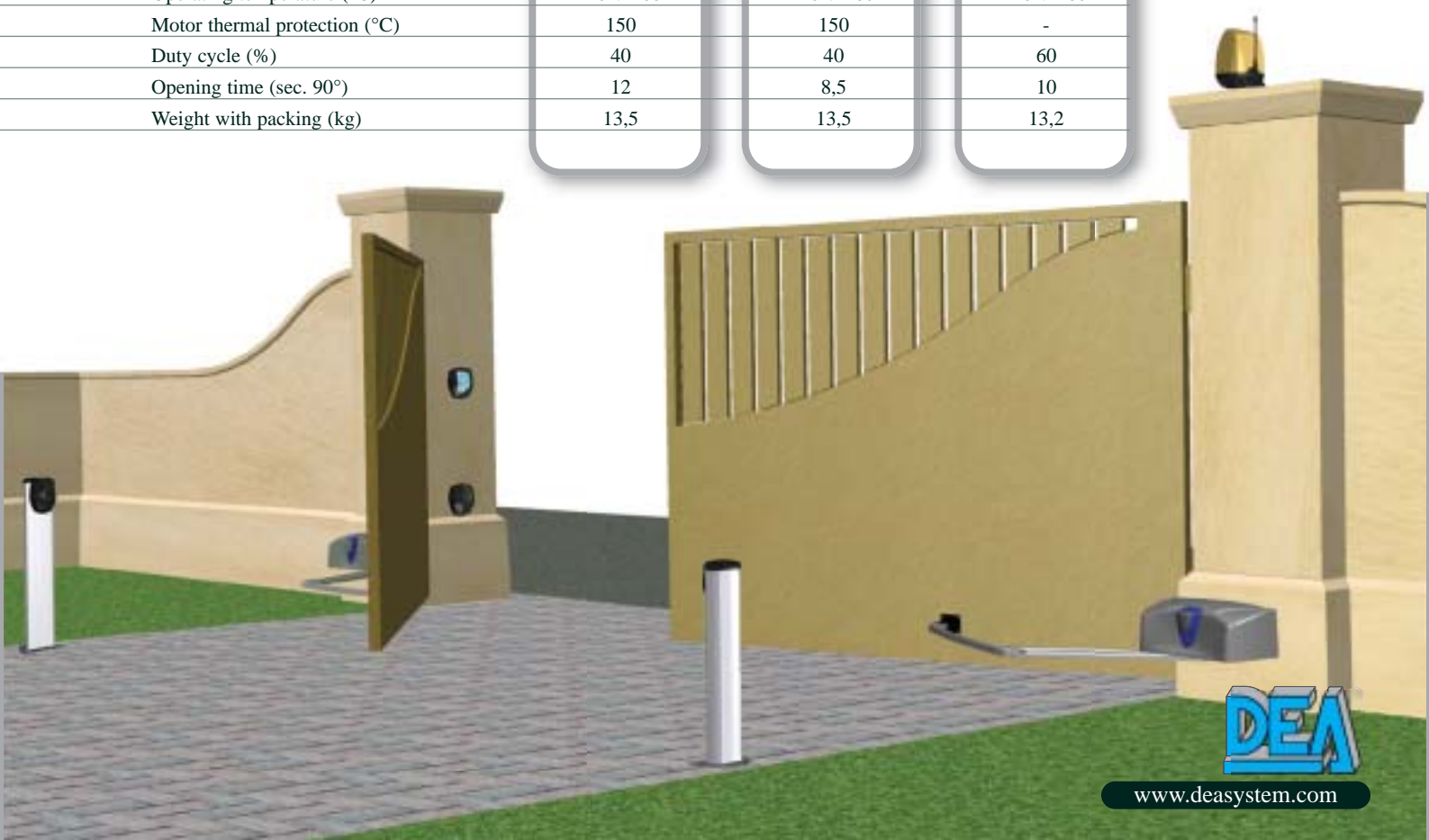


RANGE

# LIVI 500

## Technical information

Model	500 502	500R 502R	500/24 502/24
Power supply (V) (50/60 Hz)	230 AC	230 AC	230 AC
Motor power supply (V)	230 AC	230 AC	24 DC
Capacity (W)	300	300	180
Condenser (uF)	8	8	-
Protection level (IP)	44	44	44
Max torque (Nm)	350	280	180
Operating temperature (°C)	-20 ÷ +60	-20 ÷ +60	-20 ÷ +60
Motor thermal protection (°C)	150	150	-
Duty cycle (%)	40	40	60
Opening time (sec. 90°)	12	8,5	10
Weight with packing (kg)	13,5	13,5	13,2



# Electromechanical operator for swing gates



## LIVI 500

ADAPTABLE TO ALL

The ideal solution **for each type of swing gates,**

even with large posts,

where the installation of other types of operators

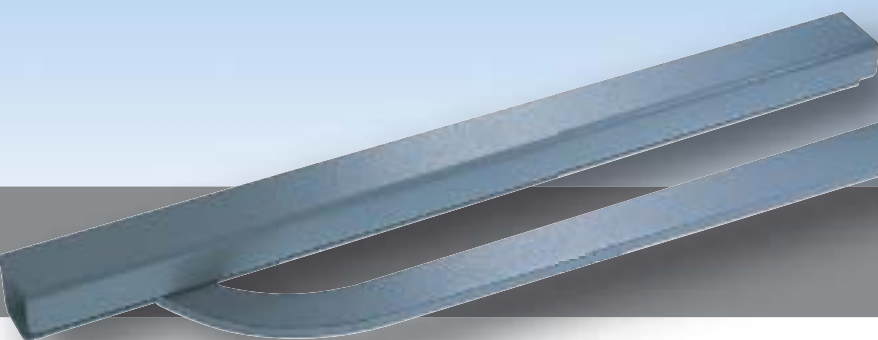
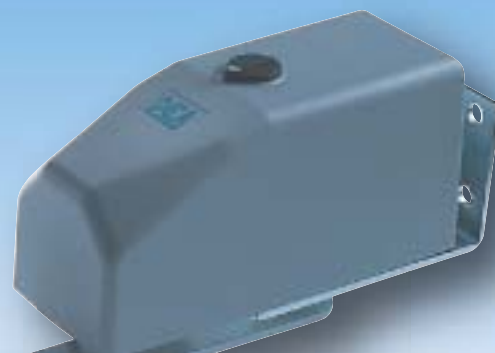
is impossible or impractical.

The rail arm allows its use in cases where the **space**

on sides of the gate **is small**

The installation, **easy and fast,** does not require any modification

to the gate structure.



- Electromechanical automation, 230V ac and 24V dc.
- Suitable for leafs up to 3,5 m long.
- Suitable with large posts.
- Easy to install.
- Internal unlocking system.
- Grease soaked gear motor.
- Quick and silent.
- Articulated aluminium arm.
- Rail arm (optional).



Kit 502/1: Complete automation with DEA original accessories.

### For leafs up to 3 m

**LIVI 500:** operator 230V ac, self-locking.

**LIVI 501:** operator 230V ac with limit switches, self-locking.

### For longer leafs \*

**LIVI 500R:** operator 230V ac, not self-locking.

**LIVI 501R:** operator 230V ac with limit switches, not self-locking.

*\*Always use with electric lock.*

### For solutions in low voltage\*

**LIVI 500/24:** operator 24V dc, self-locking.

**LIVI 501/24:** operator 24V dc with limit-switches, self-locking.

*\*the automation in 24V dc enables programmable limit switches and the final slow-down in opening and closing; moreover a battery backup system enables the operation in case of power failure.*

*All models in 230V ac are also available in slow version (add L to code).*






*The DEA System control boards are planned to optimize the performances of Livi 500 range.*

*It is suggested to use control boards with electronic force adjustment: 202E/3 (230V ac) or 224/2 (24V dc).*

The models

Rail arm art.560B.  
To avoid side obstructions in case of special space requirements.

The products

<b>Electromechanical barriers</b> PASS STOP 		<b>Swing gates</b> LIVI 500 WING 302 GHOST 200 OLI 600 			
<b>Sliding gates</b> LIVI 400 GULLIVER 		<b>Sectional and garage doors</b> LIVI 900 EASY 700 		<b>Roller shutters</b> LIVI 800 C WILL 	

The accessories



**Digikey:**  
Safe and reliable,  
available wireless  
and hard-wired.



**Radio devices:**  
frequency 433,92 Mhz,  
available Dip-Switch  
or Self-Learning type.



**Flashing light**  
with built-in  
433,92 Mhz  
aerial.



**Control boards:**  
230V ac and 24V dc,  
safe and simple  
to program.



**Safety beams:**  
reliable and easy  
to install.



**Keyswitch:**  
available flush mounted or  
surface mounted.



**DEA SYSTEM S.r.l.**  
GATE AUTOMATION  
36010 Zanè (Vicenza) Italy - Via Monte Summano, 45E  
Telefono: +39-0445-314944 - Telefax: +39-0445-314334  
<http://www.deasystem.com>  
[deasystem@deasystem.com](mailto:deasystem@deasystem.com)

DEALER STAMP

